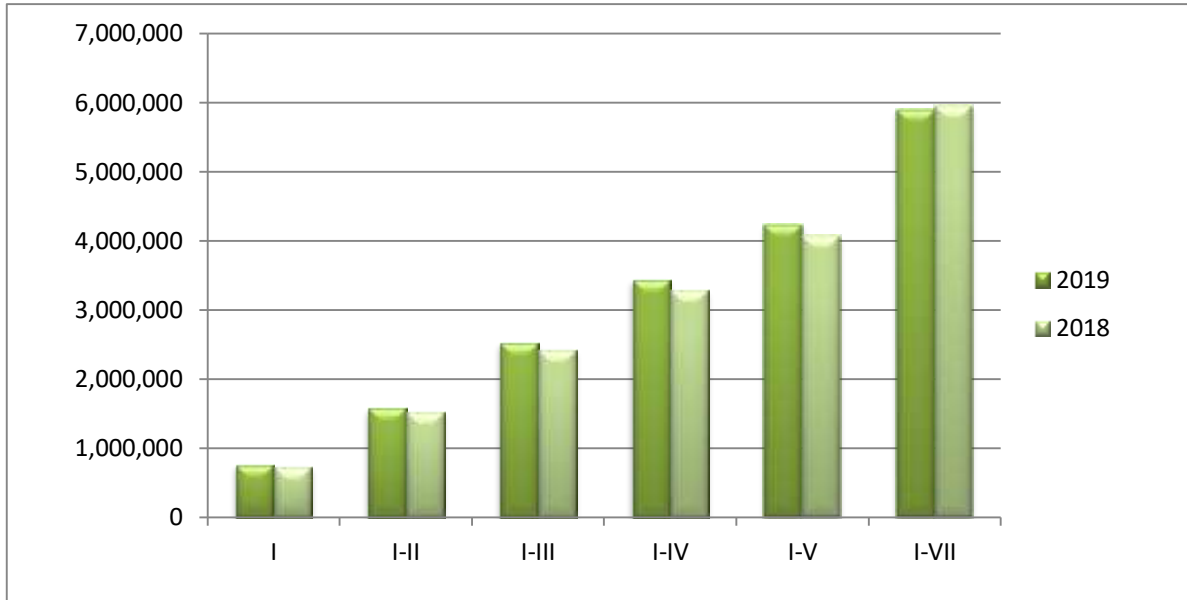
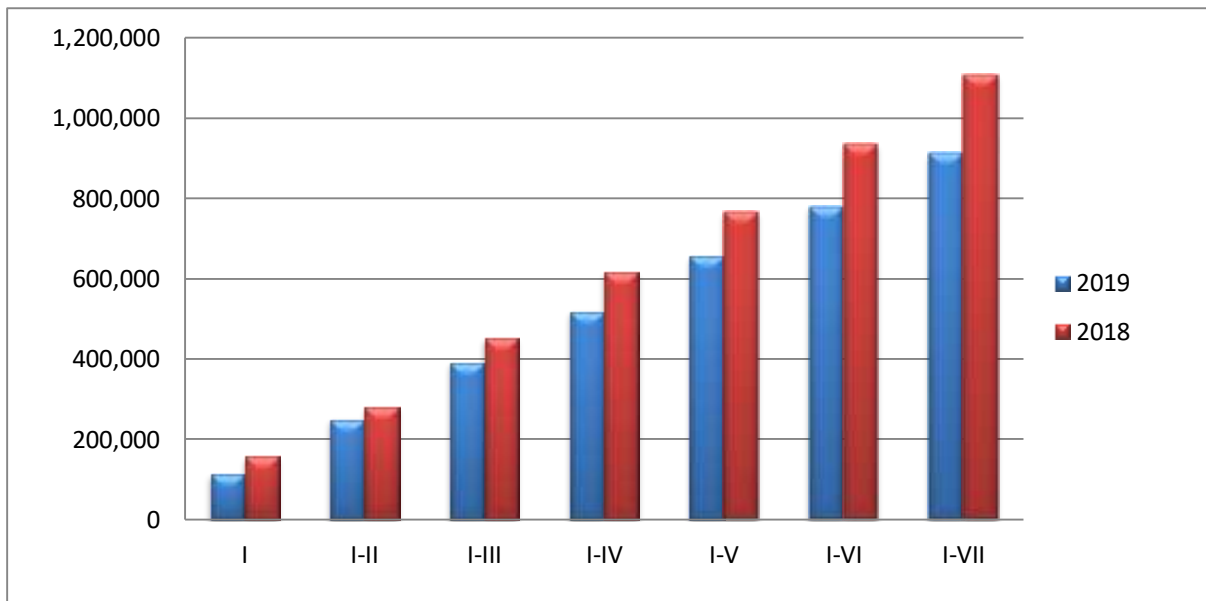


Tons of transported cargo by the type of cargo

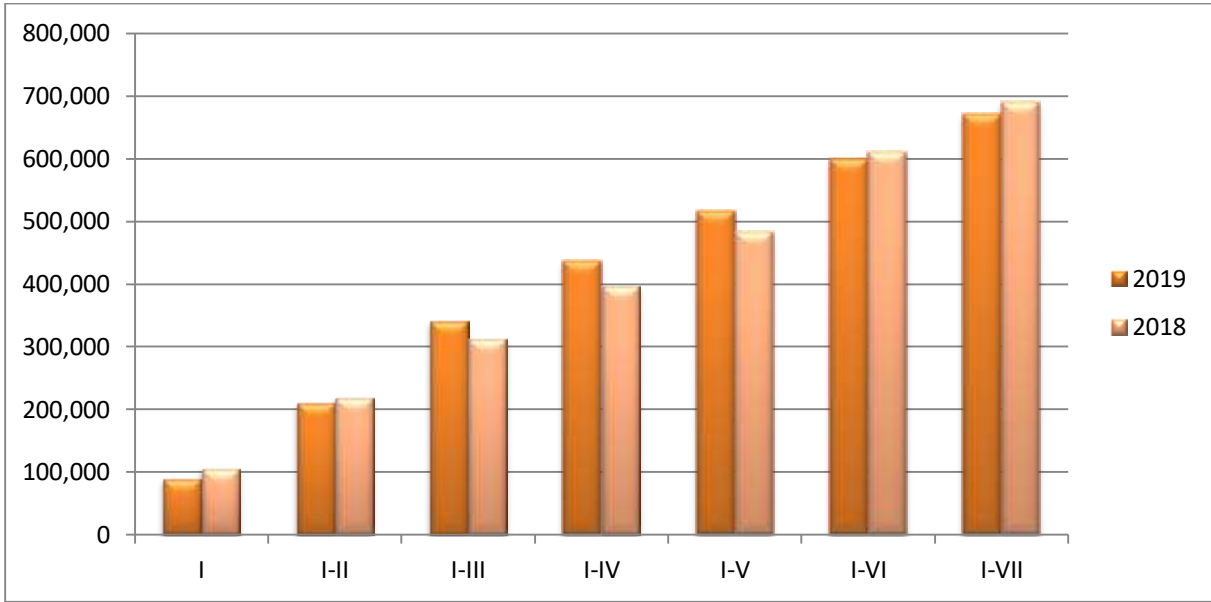
Total freight	I	I-II	I-III	I-IV	I-V	I-VI	I-VII
2019	750,741	1,571,613	2,520,532	3,433,199	4,221,713	5,077,640	5,898,135
2018	733,516	1,516,748	2,415,484	3,281,567	4,062,524	5,015,233	5,955,954



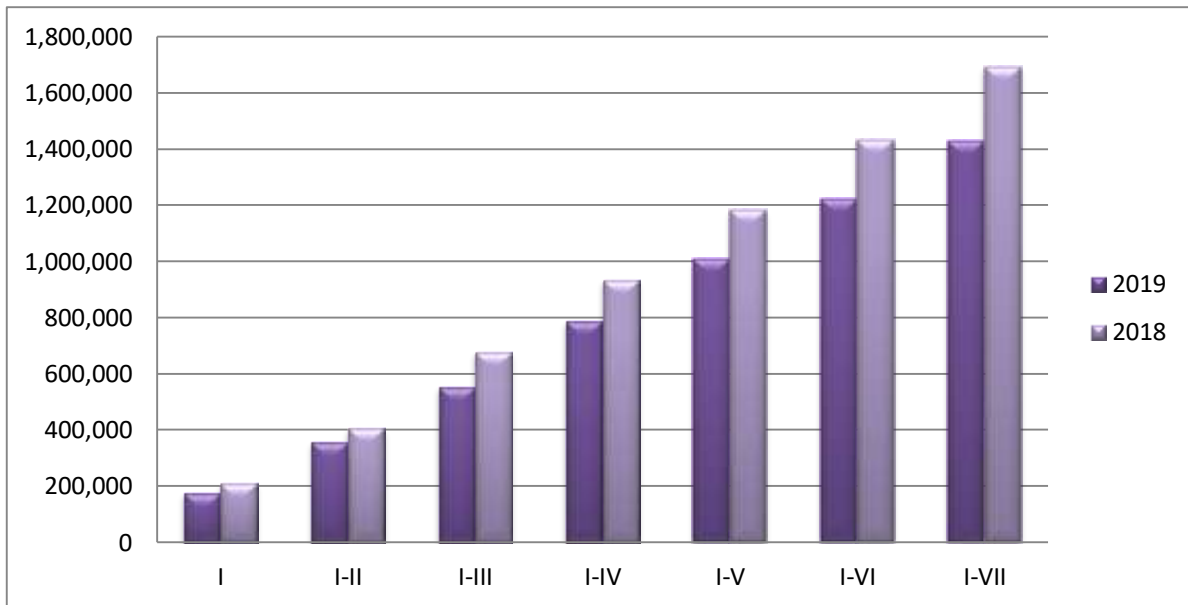
Domestic	I	I-II	I-III	I-IV	I-V	I-VI	I-VII
2019	113,383	248,813	390,607	518,677	656,517	779,929	911,156
2018	157,207	280,444	452,775	615,273	765,265	935,184	1,106,212



Export	I	I-II	I-III	I-IV	I-V	I-VI	I-VII
2019	89,198	210,703	340,956	437,706	516,524	598,226	671,439
2018	105,672	218,893	313,118	396,618	481,889	611,235	690,111



Import	I	I-II	I-III	I-IV	I-V	I-VI	I-VII
2019	174,788	356,276	552,728	786,804	1,006,751	1,221,642	1,427,858
2018	208,662	404,247	677,398	932,183	1,182,413	1,431,711	1,692,111



Transit	I	I-II	I-III	I-IV	I-V	I-VI	I-VII
2019	373,373	755,821	1,236,242	1,690,013	2,041,921	2,477,843	2,887,682
2018	261,976	613,164	972,193	1,337,494	1,632,957	2,037,103	2,467,519

